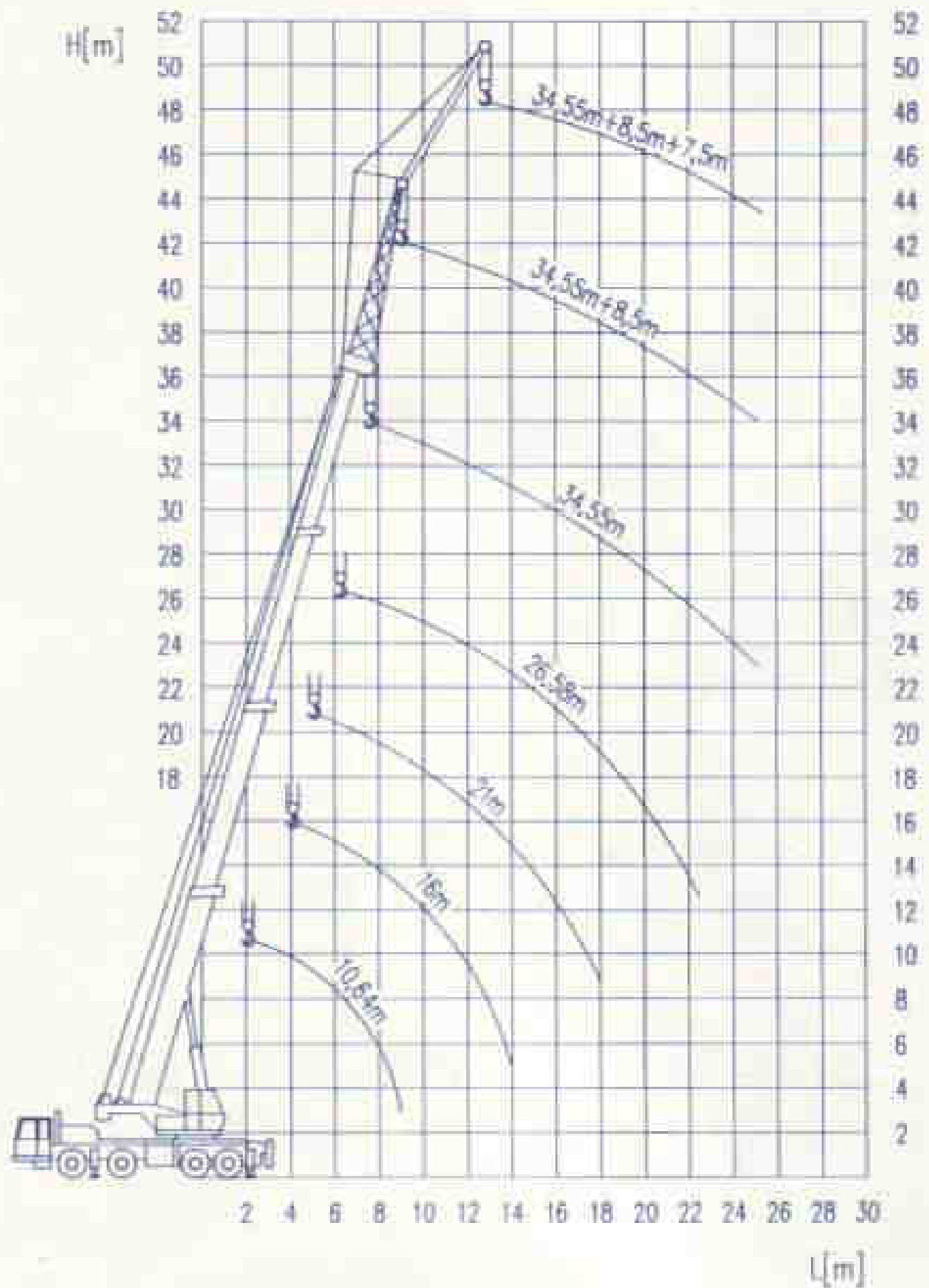


ŻURAW SAMOCHODOWY DST-0402



5. Tabela udźwignięć żurawia DST-0402

Praca na podporach wysięgnik główny zakres pracy 360°									
L=10.64[m]		L=10.65[m]		L=13.0[m]		L=16.0[m]		L=18.0[m]	
R[m]	Q[t]	R[m]	Q[t]	R[m]	Q[t]	R[m]	Q[t]	R[m]	Q[t]
3.50	40.00	4.00	24.00	4.00	24.00	4.00	24.00	5.00	22.20
4.00	35.00	5.00	23.00	5.00	23.00	5.00	23.00	6.00	19.60
5.00	28.00	6.00	22.20	6.00	21.30	6.00	20.20	7.00	16.16
6.00	22.20	7.00	16.80	7.00	16.80	7.00	16.80	8.00	12.58
7.00	17.00	8.00	12.90	8.00	12.90	8.00	12.90	9.00	10.10
8.00	12.90	9.00	6.50	9.00	8.40	9.00	10.30	10.00	8.32
9.00	6.50			10.00	6.80	10.00	8.40	11.00	7.16
				11.00	5.20	11.00	7.20	12.00	6.06
						12.00	6.10	13.00	5.10
						13.00	5.10	14.00	4.24
						14.00	4.20	15.00	3.37

Wysięgnik główny 360°						Wysięgnik główny+człon martwy	
L=21.00[m]		L=24.00[m]		L=26.58[m]		L=34.55[m]	
R[m]	Q[t]	R[m]	Q[t]	R[m]	Q[t]	R[m]	Q[t]
5.00	21.00	6.00	15.50	6.00	13.00	7.00	7.00
6.0	18.10	7.00	13.50	7.00	11.90	8.00	6.60
7.00	15.20	8.00	11.35	8.00	10.70	9.00	6.20
8.00	12.10	9.00	9.26	9.00	8.80	10.00	5.80
9.00	9.80	10.00	7.71	10.00	7.30	11.00	5.30
10.00	8.20	11.00	6.70	11.00	6.30	12.00	4.80
11.00	7.10	12.00	5.68	12.00	5.35	13.00	4.30
12.00	6.00	13.00	4.82	13.00	4.55	14.00	3.70
13.00	5.10	14.00	4.13	14.00	3.90	15.00	3.30
14.00	4.30	15.00	3.53	15.00	3.45	16.00	2.90
15.00	3.60	16.00	3.04	16.00	3.00	17.00	2.60
16.00	3.10	17.00	2.60	17.00	2.60	18.00	2.30
17.00	2.60	18.00	2.20	18.00	2.20	19.00	2.05
18.00	2.30			19.00	1.90	20.00	1.80